

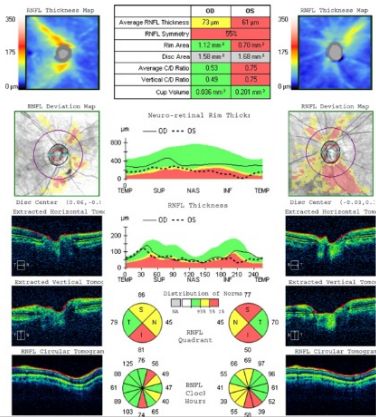
- VISUAL HEALTH DIGITAL TESTING -

Early detection is KEY in preserving your vision! We want ALL of our patients to complete these important diagnostic screenings – which is why we offer lower than insurance pricing!

\*IMPORTANT NON CONTACT TESTING – REDUCE IN OFFICE WAIT TIME\*

\*DILATION NOT REQUIRED\*

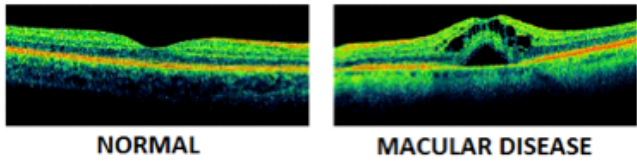
**OCULAR COHERENCE TOMOGRAPHY (OCT SCAN):**



The latest in ocular screening technology. **Non-invasive 3D scan** that takes cross-section images and detailed measurements of the retinal layers (specifically the macula and optic nerve). It is the best screening test for early detection of conditions such as Macular Degeneration, Glaucoma, blurred vision and Diabetic Disease. In many cases with the OCT scan, diseases can be detected years before any symptoms occur and even the smallest changes can be monitored at your annual visit.

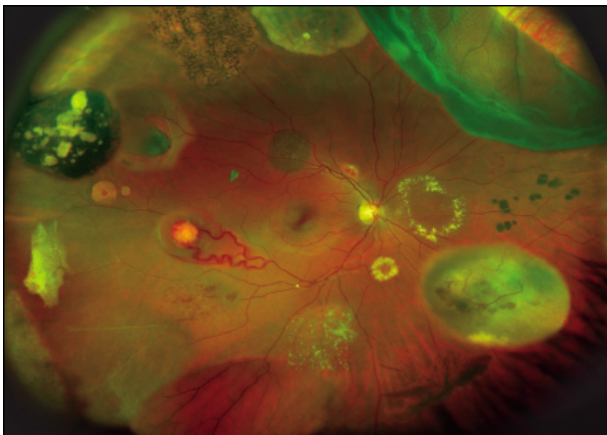
Would you like the OCT Scan? (Please circle one)

YES Discuss with Dr. NO  
(Initials \_\_\_\_)  
Service Fee - \$45



**OPTOMAP ULTRA-WIDE RETINAL PHOTO:**

High Definition camera that takes a photo of the back of the eye to allow close examination of the Retina, blood vessels, and nerve fibers. This **DOES NOT REQUIRE DILATION**. This technology allows the Doctor to detect diseases such as Glaucoma, Diabetic Retinopathy, Hypertensive (high blood pressure) Retinopathy, Cholesterol plaques, Macular Degeneration, Melanoma, Brain Tumors, and much more.



For healthy patients, it serves as a baseline for future reference. Recommended for anyone with Diabetes, Hypertension, High Cholesterol, Migraine Headaches, Flashes/Floaters, or high prescriptions.

Would you like the Retinal Photo? (Please circle one)

YES Discuss with Dr. NO  
(Initials \_\_\_\_)  
Service Fee - \$39

**WE HIGHLY RECOMMEND THAT ALL OF OUR PATIENTS RECEIVE THIS EVALUATION ANNUALLY!**